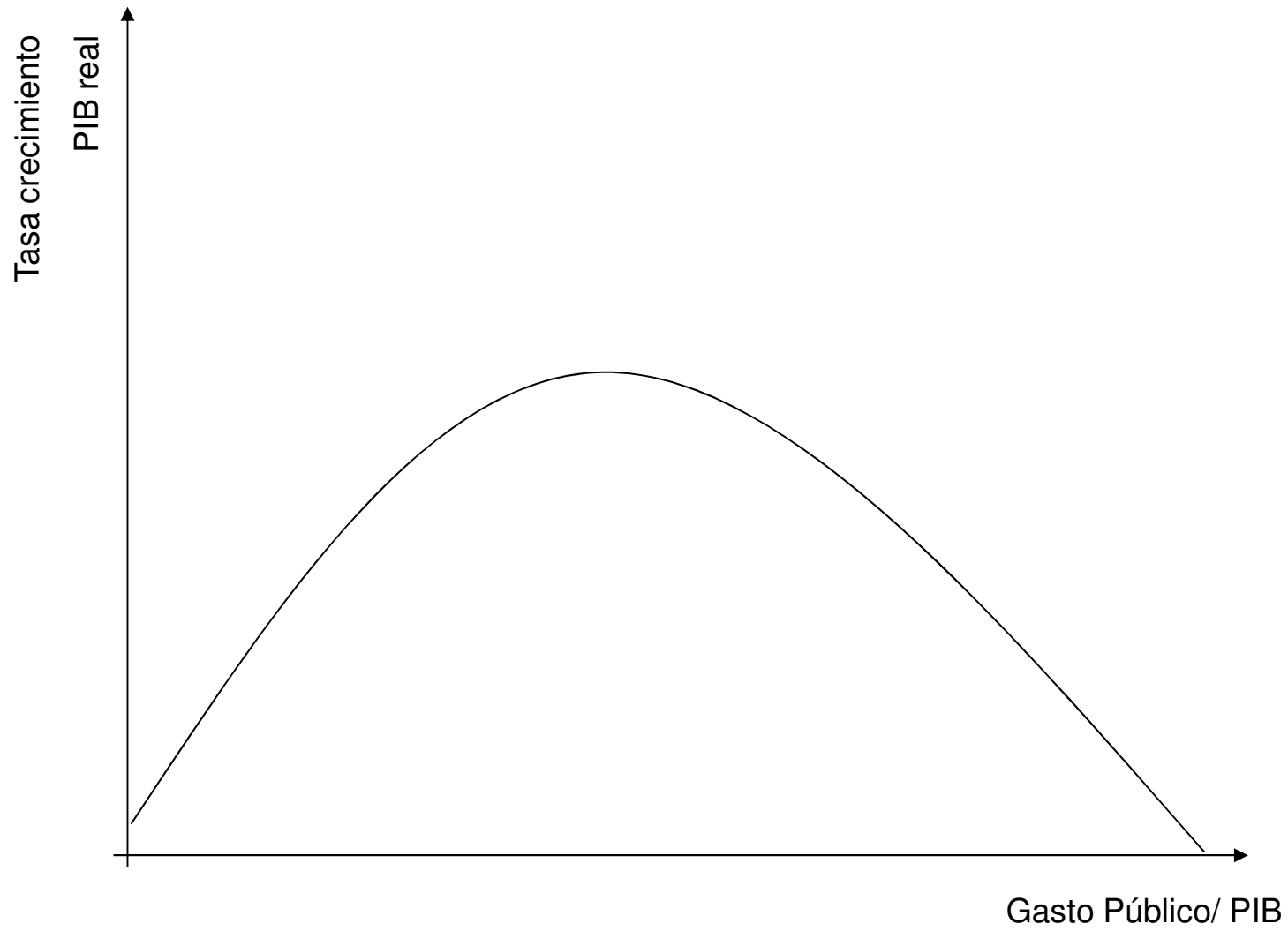
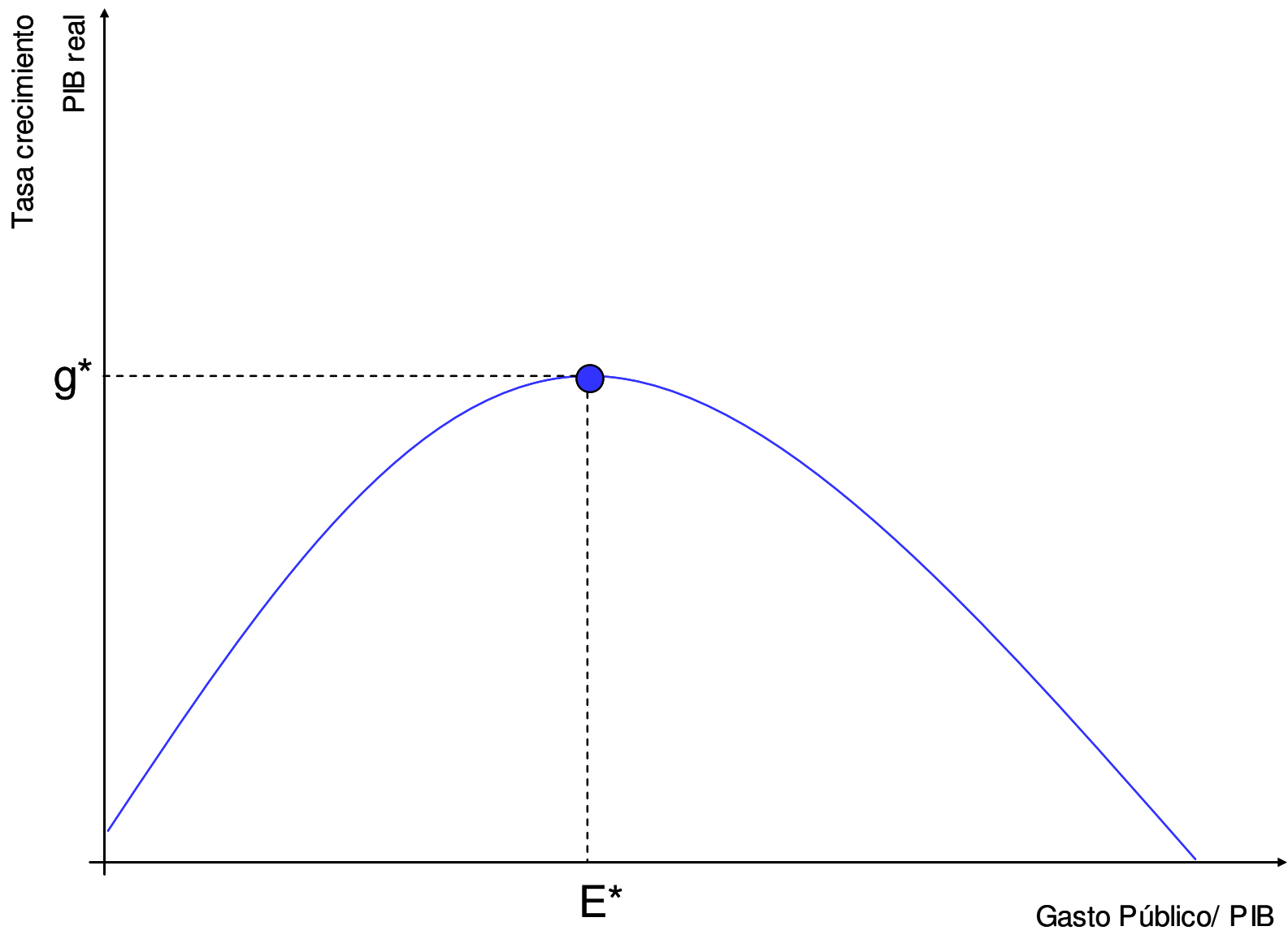
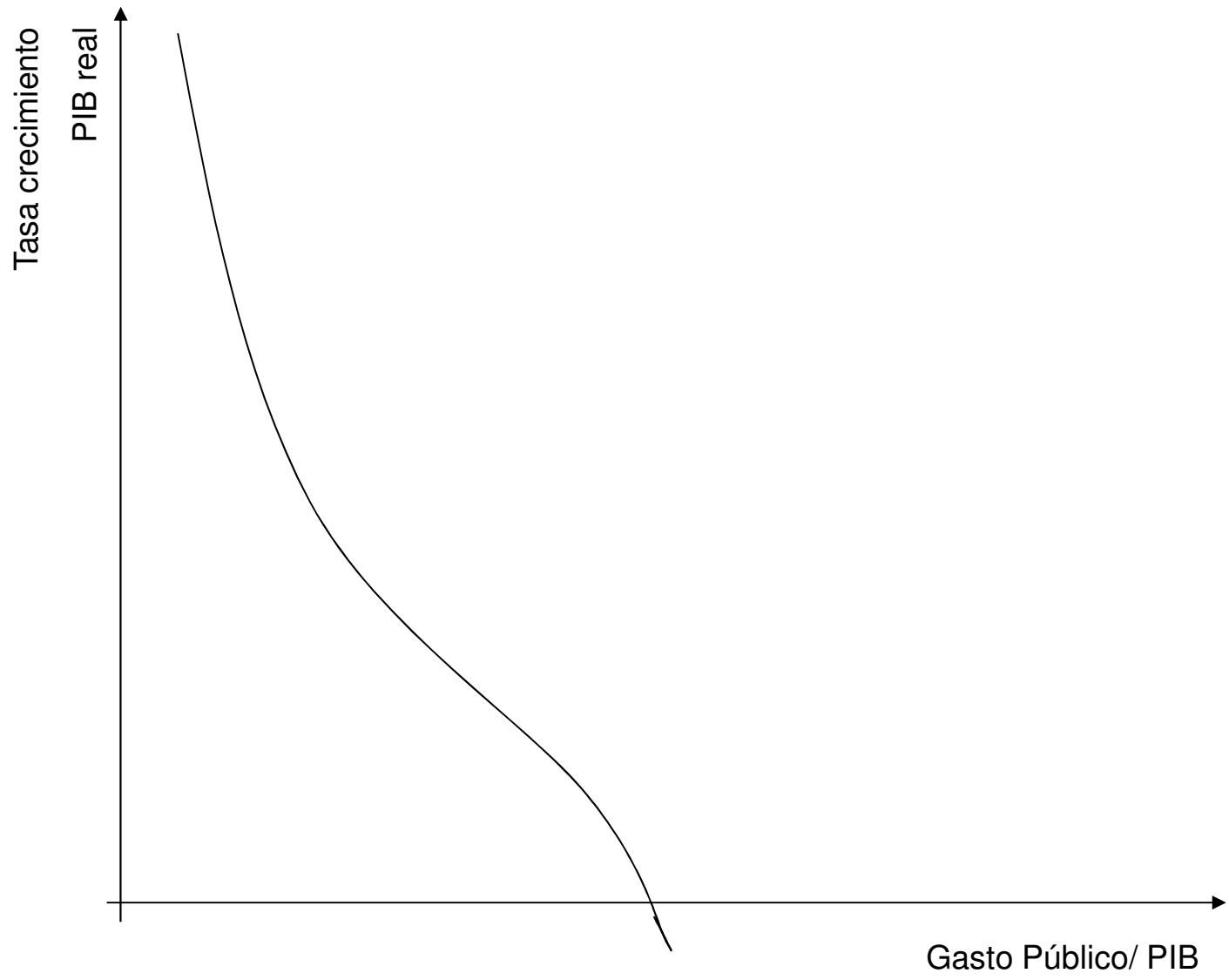


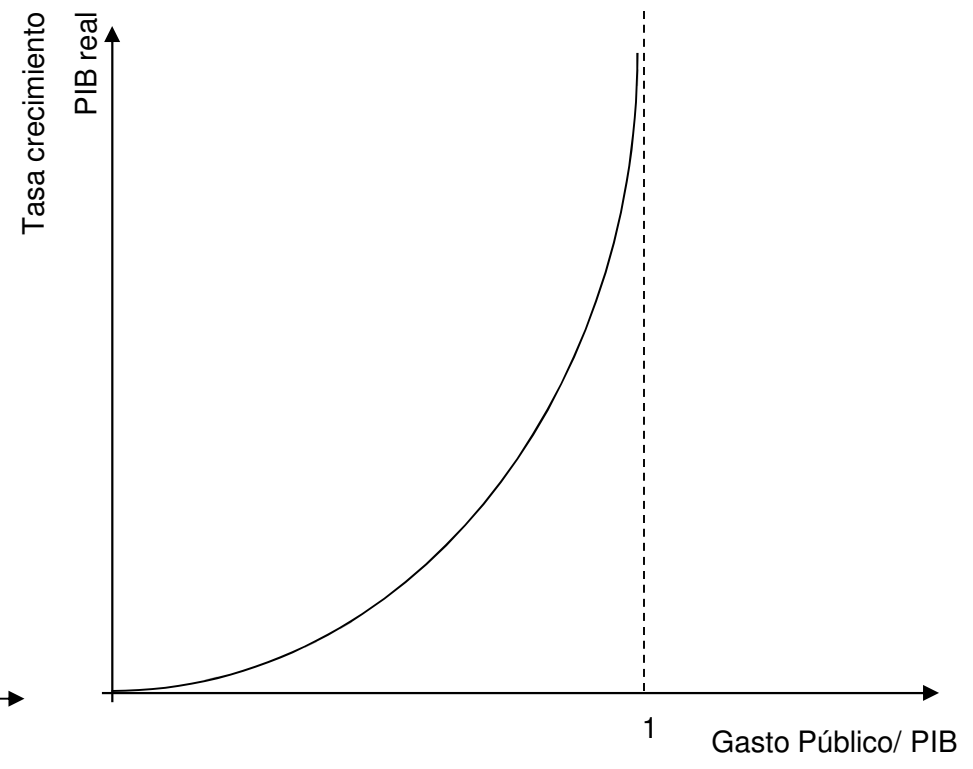
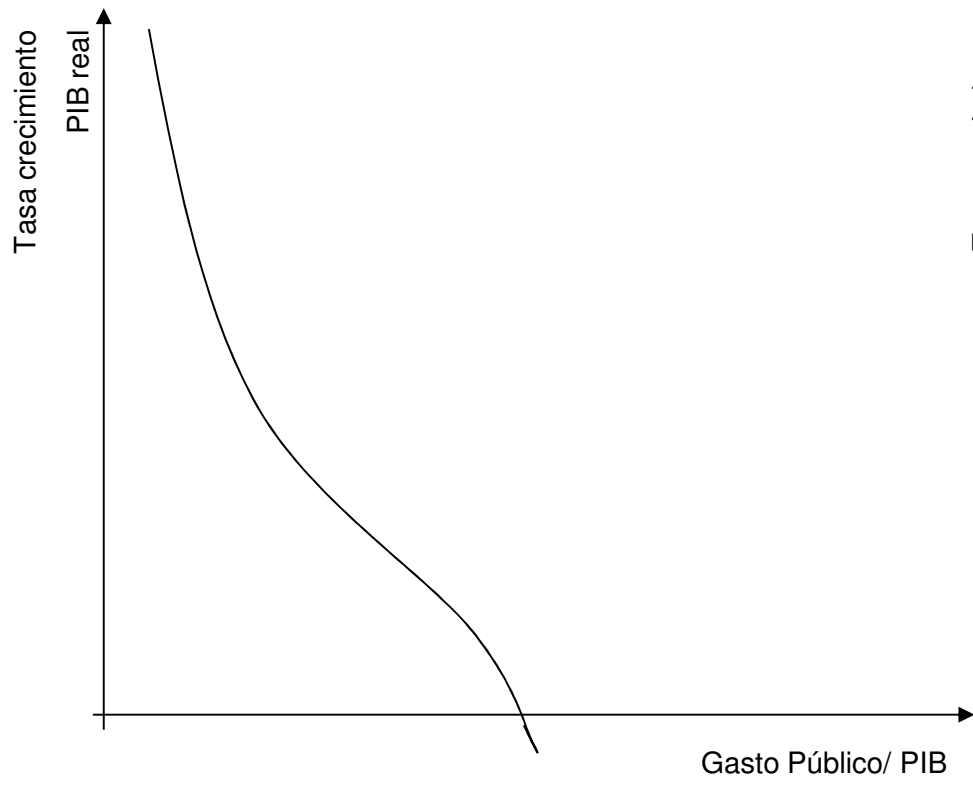
Ejercicios con la relación entre crecimiento económico y gasto público.

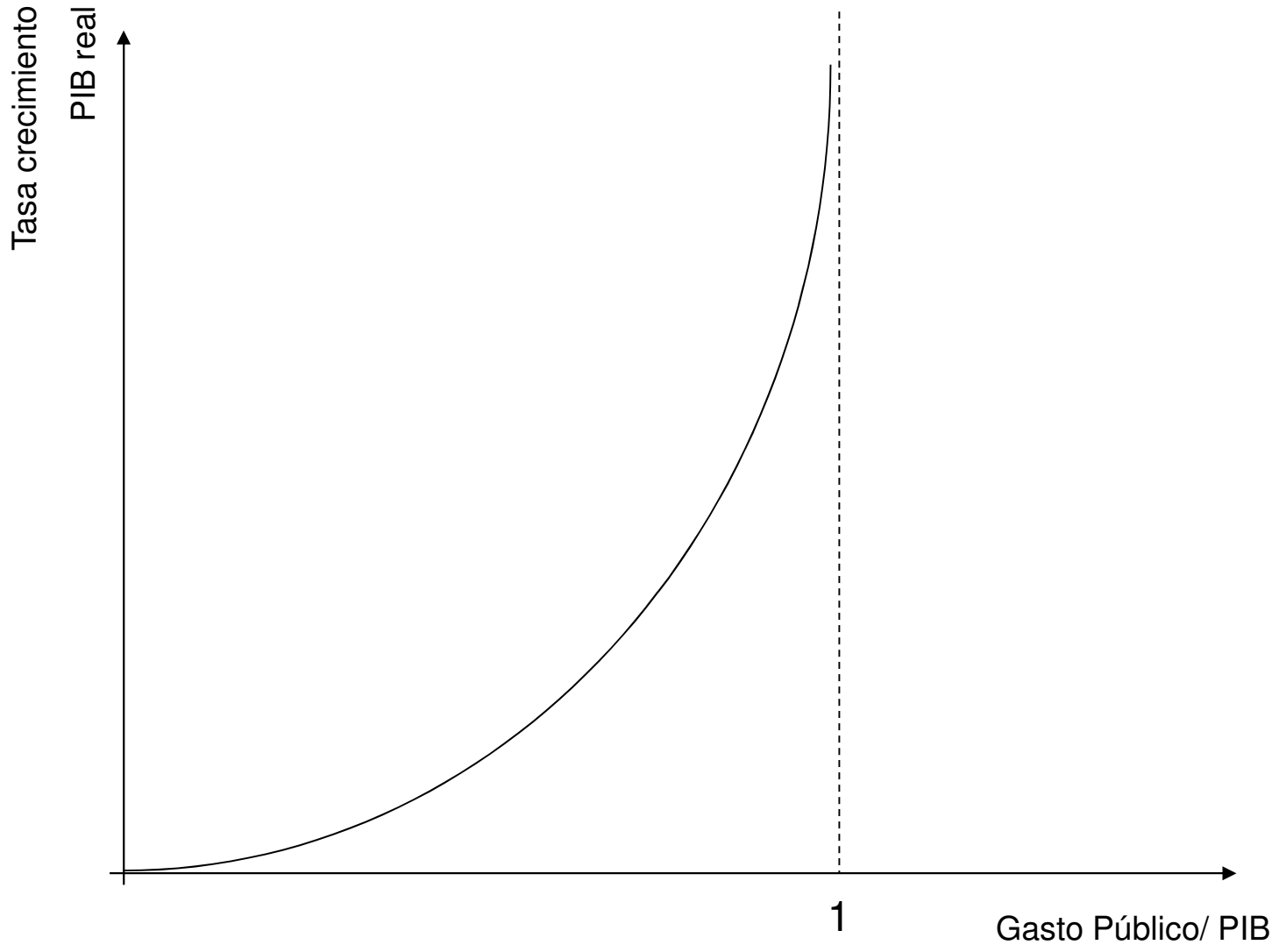
- IV Congreso de Economía Austríaca en el Siglo XXI
- Mark Skousen.
- Colin Clark, Gerald W. Scully, Robert Barro (1989), Richard Rahn, Richard Armey (1995)
- Dimitar Chobanov y Adriana Mladenova (2009), sugieren denominarla curva BARS, a partir de las iniciales
- Curva G-PBI



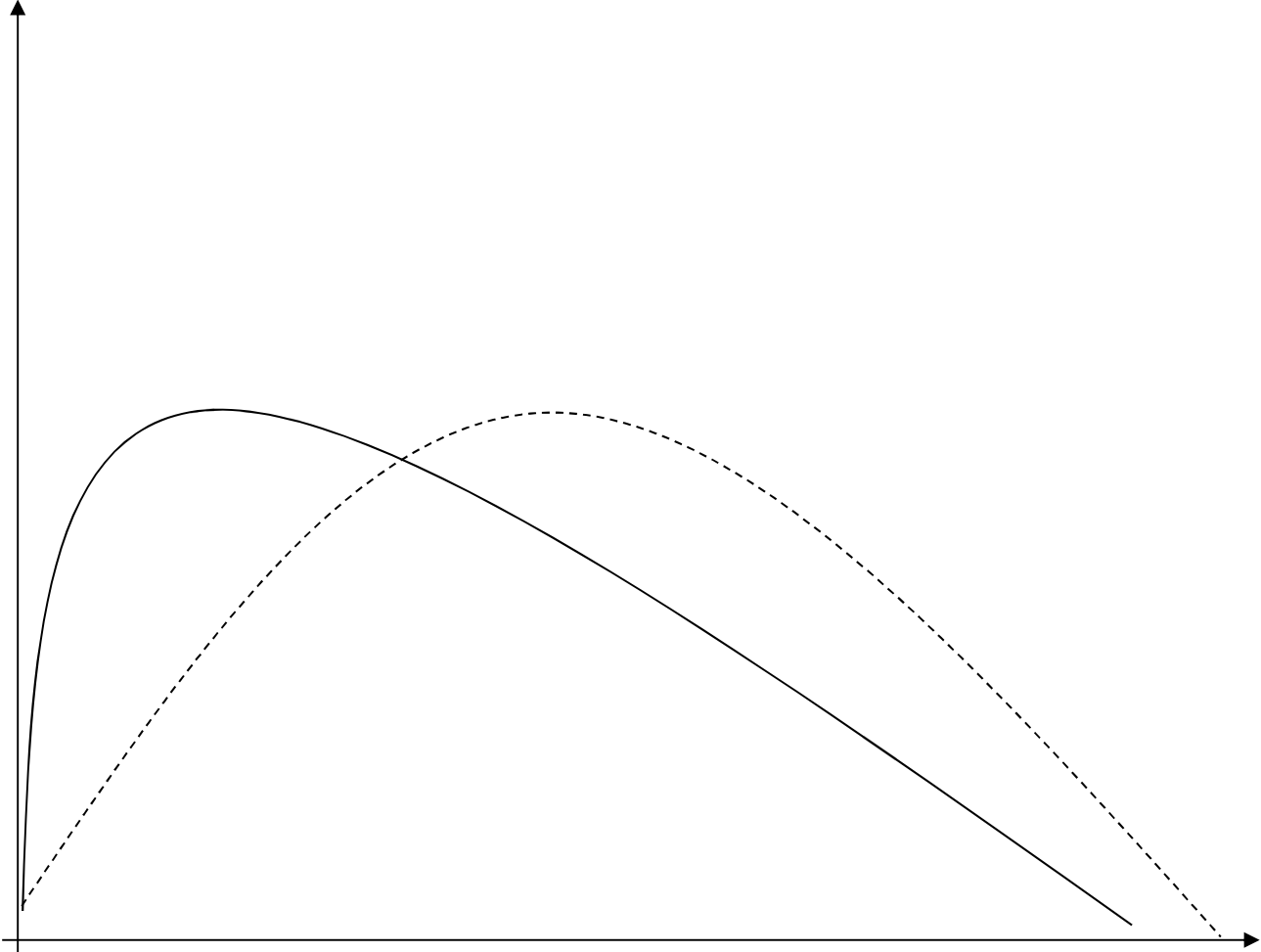








Tasa crecimiento
PIB real



Gasto Público/ PIB

